

UAV - M694B

ENGINEERED TO PERFORM

The UAV-M694B is distinguished by its capability for live video streaming with minimal latency, making it indispensable for aerial surveillance, military intelligence operations, and Search & Rescue missions.

Key Features:

- Ready for Beyond Visual Line of Sight (BVLOS) operations
- Capable of estimating target GPS coordinates
- Equipped with HD/4K/EOIR camera
- Provides near real-time 1K video transmission
- Offers optional onboard image processing powered by AI
- Features foldable landing gears for easy portability
- Supports both manual and autonomous navigation
- Tailored drone solutions available
- Developed domestically
- Facilitates easy swapping of payloads
- Conveniently portable with a backpack carrying option



MADE IN INDIA



Increase
Indigenous
Content (IC)

Local service support

Specifications:

| | |
|-------------------------------------|---|
| Take -off Weight | 3.6kg |
| Material | Carbon Fiber, Aluminum |
| Dimensions (l x b x h) in mm | 510x499x375 |
| Max ascent speed | 5 m/s |
| Max descent speed | 5 m/s |
| Max Cruising speed | 2 - 20 m/s |
| Max flight time | 50 Min |
| Max Wind speed resistance | 10 m/s |
| Operating Temperature | 0 to 55 C |
| GNSS+NaVIC | GNSS / QZSS L1C/A , Galileo E1 -B/C BeiDou B1C, and NaVIC SPS -L5 |
| Hovering Accuracy Range | Horizontal: 1.0 m Vertical: 1.0 m |
| Operating Frequency | 2.402 – 2.4.78 GHz |
| Operating modes | Manual, Autonomous |
| Operating range | 5Km |
| Safety features | Return to home/ Land on Communication failure, Return to home/ Land battery low. |
| Mission planning | Pre-planned, dynamically adjustable mission points. |

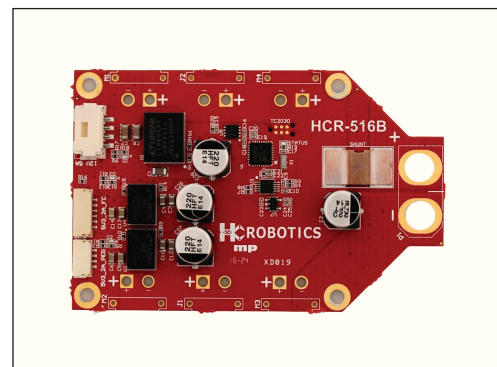
Gimbal Camera specifications

| | |
|---------------------|--|
| Type | Day and Night 4K Ultra HD Camera |
| Video Output Port | Ethernet |
| Working Voltage | 11-25.2 V |
| Power Consumption | 3 W |
| Working Temperature | -10 ~ 50 °C |
| Waterproof Level | IPX4 |
| Sensors | Dual Sensors 4K 8MP 6X Digital Zoom Gimbal Camera 640 x 512 Thermal Imaging |
| Weight | 200g (Camera) |
| Lens | 4K Ultra HD |

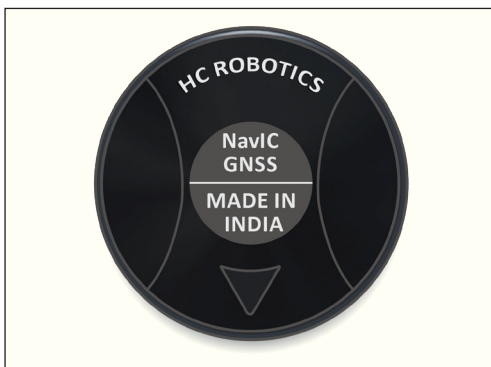
Indigenous Components



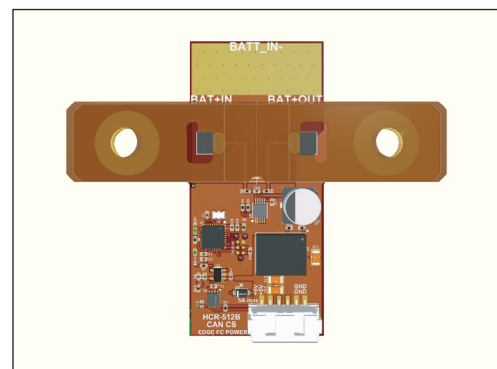
Edge Flight Controller: FC-E504



Power distribution board-HCR-516B



GNSS+NavIC with Compass
HCR-523



Current Sensor HCR-512B